

TH24 Hamtrace

GENERAL CHARACTERISTICS

Wet / White Wet Inlay dimensions: 46 x 46 mm

—Antenna dimensions: 44 x 44 mm

Standard pitch: 52.92 mm

Operating frequency: Global (860 - 960 MHz)

Chip: IMPINJ Monza 4D/E/QT

EPC Memory: 128/496/128 bits

USER Memory: 32/128/512 bits

TID Memory: 96 bits, preencoded for multivendor chip (MCS) based serialization, factory programmed

Inlay substrate material: PET

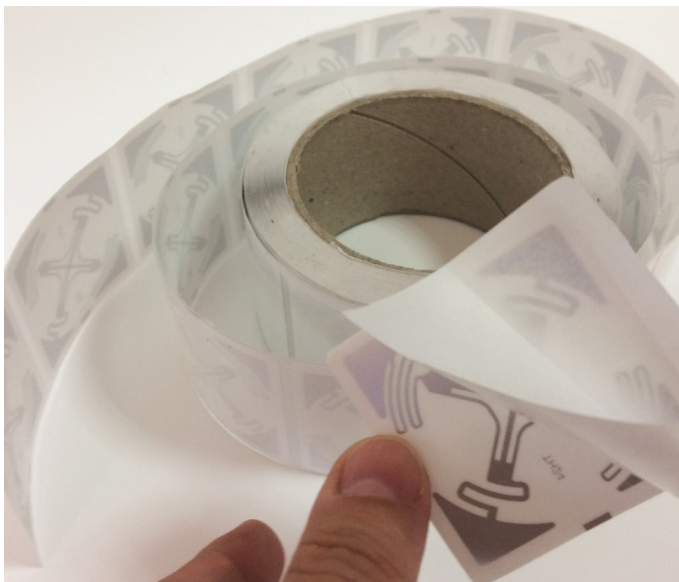
Inlay-to-liner adhesive: SH3020 (Arconvert)

Liner material: CC62 (Arconvert)

Total thickness over chip: 187 microns

Minimum order quantity: 10,000 pcs. Average of units per roll: TBD

Our RFID tag TH24 Hamtrace was designed for RFID deployments in the meat industry, **especially for ham industry**. This RFID tag shows an **excellent performance in environments with high dielectric loads**.



CARE AND HANDLING RFID inlays are sensitive to ESD. Observe standard practices to keep environmental static charge to a minimum.

APPLICATIONS This product should be tested by the customer/user thoroughly under end use conditions to ensure the product meets the requirements. Trace-ID does not represent that this product is fit for any purpose or use.

PRODUCT CHANGES Trace-ID reserves the right to modify, change, supplement or discontinue product offerings at any time without notice. © 2018 Trace-tech Id Solutions S.L. All rights reserved.

Standard web width: 52 mm

Unwind direction: Label side out

RF Protocol: ISO-18006-C, EPC Class 1, Gen 2

RoHS: EU Directive 2011/65 EU Compliant

Quality assurance: 100% read tested with out-of-tolerance inlay marked

Operating temperature: -40°C to 85°C

COMMON APPLICATIONS

Ham industry. Meat industry. For high dielectric loads.

